



onelogin | sumologic

Real-Time Application Access Security, Event Streaming, and Analytics

Managing secure access across multiple cloud applications can be error-prone and often requires excessive manual work to identify vulnerabilities. Together, OneLogin and Sumo Logic deliver a joint solution that protects application access based on customized security policies and enables enhanced app access visibility across your entire application environment.

OneLogin enables an enterprise-grade identity and access management solution that enforces login policies across your entire application portfolio, then streams events to Sumo Logic's security analytics service to monitor and visualize user activities, behavioral anomalies and trends over time. With OneLogin and Sumo Logic, you can quickly identify and resolve security risks based on real-time analytics. Gain the visibility you need to leverage the cloud with security and confidence.

onelogin

Create & Enforce Security Policies Across Apps

Secure SSO | MFA | Directory Integration

sumologic

Analyze, Visualize App Access

Audit Trails | Monitor Activity | UEBA

Protect Access to Apps with Single Sign-on

Use OneLogin's real-time Active Directory Connector to secure application access and improve user adoption by allowing employees to use their master credentials to log into all of their corporate SaaS applications.

Customize Security Controls

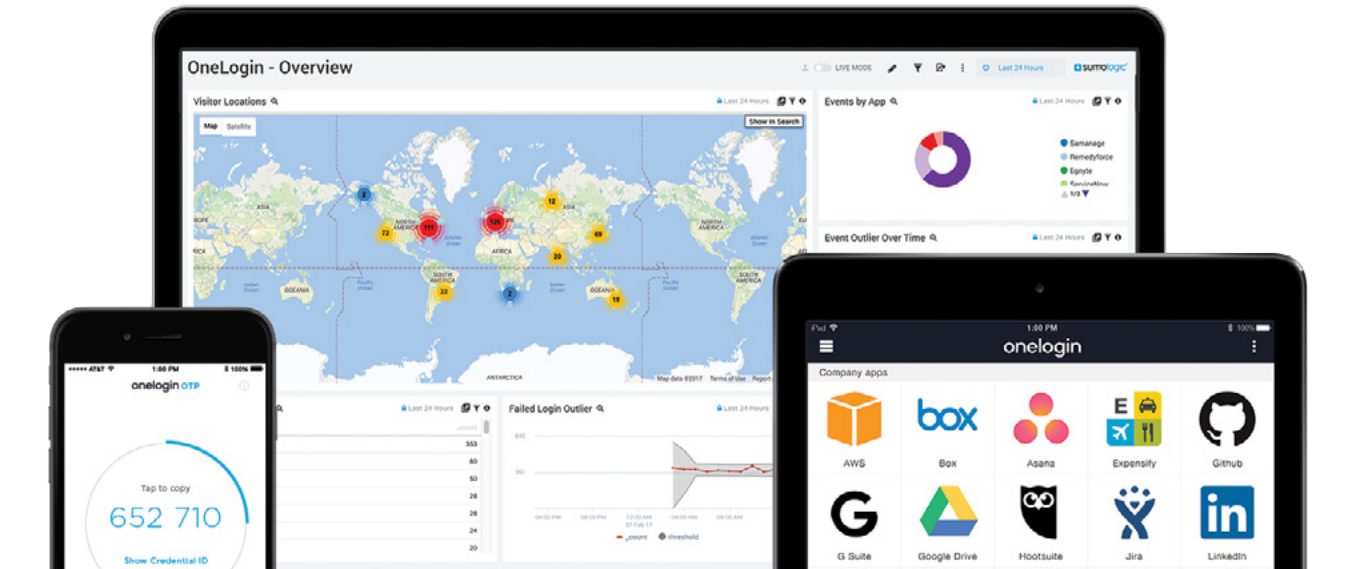
Create and enforce customized security policies such as multi-factor authentication, password complexity, session timeout, and more. Easily map those policies based on user attributes or other identifiers such as IP address.

Monitor User Activity & Identify Threats

OneLogin's event broadcaster streams events to Sumo Logic as they occur, so you can track patterns and see anomalies, such as access from blacklisted countries, geographically separated locations, and more.

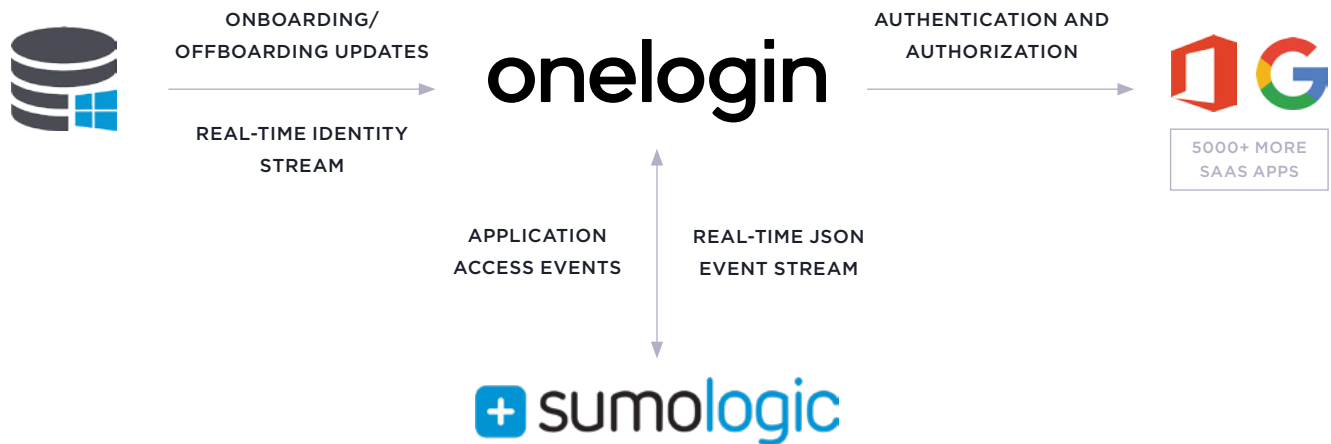
Audit Application Access

Understand the impact of application access policy changes on security and user productivity, and fix problems caused by poor policies.



ONELOGIN + SUMO LOGIC INTEGRATES WITH YOUR EXISTING CLOUD ENVIRONMENT

Built entirely in the cloud, OneLogin directory integration and event streaming paired with Sumo Logic's Security Analytics gives companies real-time control and visibility of user access and behavior analytics to resolve security threats faster.



FREE ONELOGIN FOR SUMO LOGIC

GET YOUR FREE ACCOUNT

Visit onelogin.com/sumologic to get OneLogin for Free and learn more about this integration.

CONTACT US

Email info@onelogin.com to connect with OneLogin product specialist about our integration with Sumo Logic.